



Archived resources

For further resources and
documentation please visit us:
www.cinos.net

▶ 55VH7B

55" Class (54.6" diagonal)



With its borderless design, the VH7B series offers maximum immersion for video walls. Engineered with efficient management tools such as quad-core System on Chip (SoC) which plays various types of content without the need for an external media player. The VH7B is perfect to effectively raise a customer's awareness, particularly in areas with heavy foot traffic such as museums, galleries, and large retail stores.

KEY FEATURES

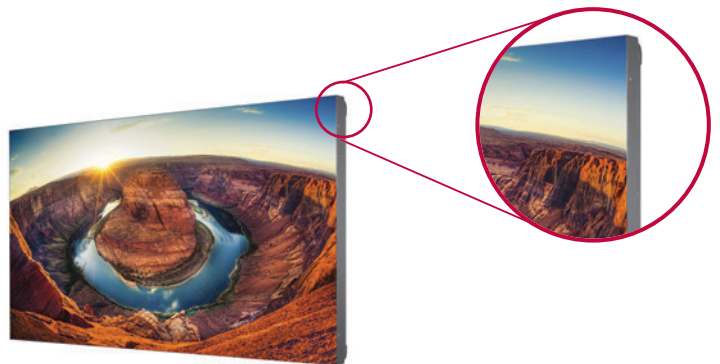
Borderless Design



NARROWEST BEZEL

Borderless design with its 0.9mm even panel bezel* enables immersive and seamless viewing experiences on assembled video wall screens.

* Panel Bezel : The black matrix section where an image is not displayed on the front panel.



Smart Platform



BUILT-IN SoC AND SYNCED PLAYBACK

The optimized built-in quad-core SoC in the VH7B can play various content formats and eliminates the need for an external media player. Using its built-in SoC, each display plays its video tile without lag for synchronized content playback.



- CPU**
1.2GHz Quad Core CPU
- Memory**
2.5GB double data 3 (DDR3) 32bit memory
- GPU**
550MHz video processor with full codec (WMV, MP4, HEVC, VP9, and H.264 capabilities)
- Internal Memory**
A storage of 8GB (4GB is occupied by system)

webOS 2.0

The webOS 2.0 platform provides easy and convenient tools to create contents. LG's Software Development Kit (SDK) and technical supports make content development and management easier.

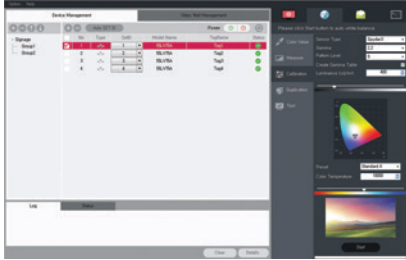


<http://developer.lge.com/webOSSignage>

Software

ADVANCED COLOR ADJUSTMENT

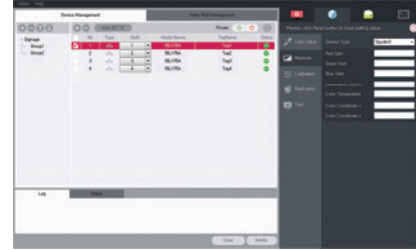
- Intuitive GUI in SuperSign C software allows measurement, color adjustment and brightness instantly on display
- Automatic white balancing of a videowall display when using a sensor



SuperSign C

REMOTE MONITORING AND CONTROL

Intuitive GUI-based Remote Monitoring & Control via the networks and RS232 connection feature in SuperSign C software.

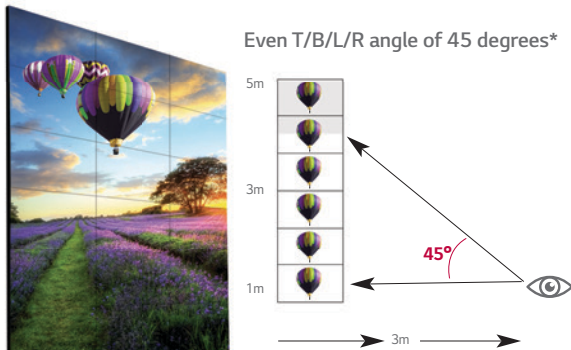


SuperSign C

Superior Picture Quality

CLEAR VIEWING ANGLE

The VH7B ensures clear picture quality even when installed in stacks of more than four. This is very favorable for the quantity of video walls installed in large spaces.



*The angle from the center of the screen to have 50% of the initial luminance.

UNIFORM BRIGHTNESS

LG's LED backlight technology guarantees high uniformity in brightness to ensure a clear picture. On other screens, certain spots may appear darker than others, but the new VH7B generates high visibility and a consistent brightness across the whole screen.



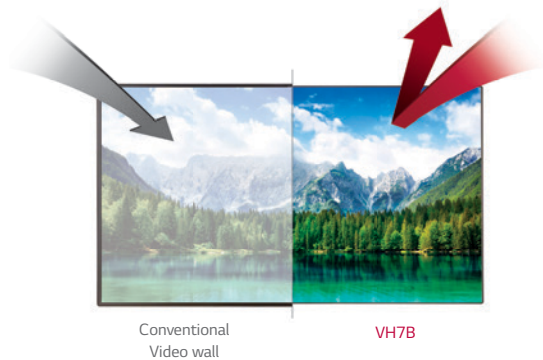
IMAGE GAP REDUCTION

The VH7B includes an image improvement algorithm that can adjust to objects located in the boundary of bezel for a seamless viewing experience.



SHINE OUT

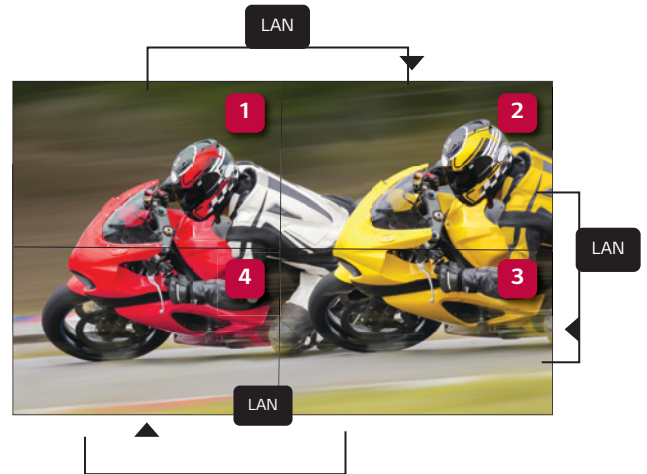
The VH7B is the perfect fit for window displays because it reflects sunlight for better visibility and a clearer image than conventional panels.



Enhanced Content Management

LAN DAISY CHAIN PERFORMANCE

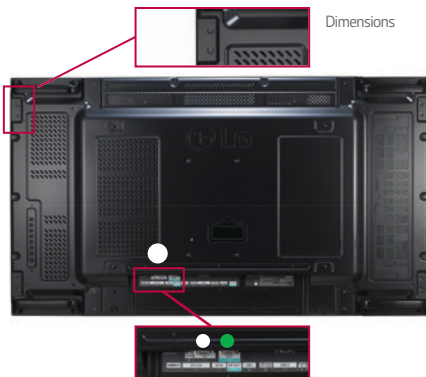
A LAN daisy chain allows you to execute commands to control and monitor the screens and even update their firmware.



Convenient Options

GUIDE BRACKET / CLASSIFIED PORT

A guide bracket is an attachment that ensures the video wall remains flat. The classified in/out port prevents errors when connecting a daisy chain.



Guide Bracket
Classified In/Out Port
• Input : White
• Output : Green

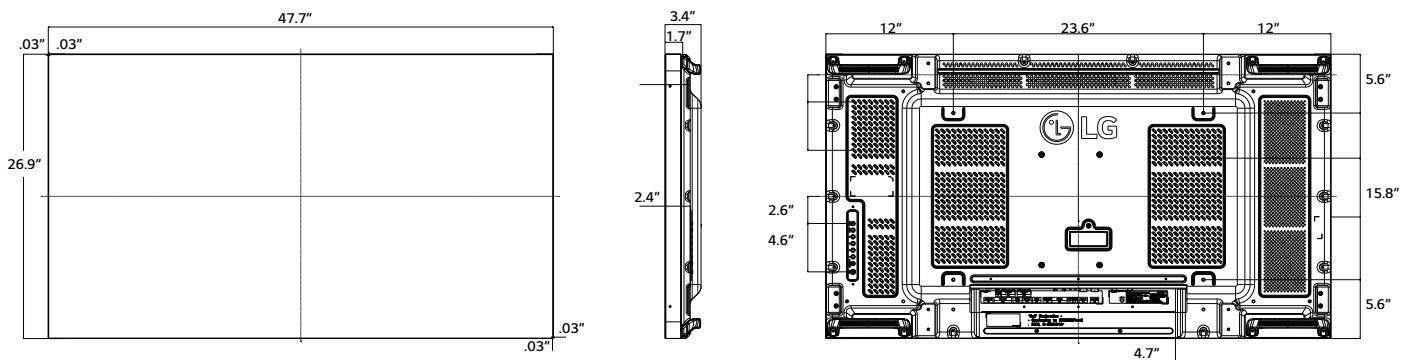
CONTROL BUTTONS

With 8 control buttons, it's easy to operate various functions of the VH7B, such as controlling the OSD (On Screen Display) and changing the input source.



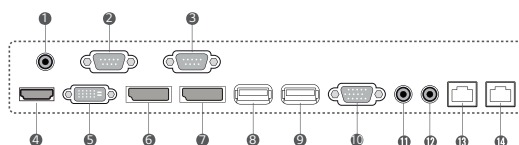
Input, Menu, Up/Down/Right/Left, Auto/Set, Power

Dimensions



Rear Jack Panel

- ① IR IN
- ② RS-232C IN
- ③ RS-232C OUT
- ④ HDMI IN
- ⑤ DVI-D IN
- ⑥ DP IN
- ⑦ DP OUT
- ⑧ USB 2.0 IN
- ⑨ USB 3.0 IN
- ⑩ RGB/COMPONENT/AV IN
- ⑪ AUDIO IN
- ⑫ AUDIO OUT
- ⑬ LAN IN
- ⑭ LAN OUT



55VH7B

Extraordinary Premium Video Wall Panel

▶ **55VH7B**
55" Class (54.6" diagonal)

PANEL	Model name	55VH7B	SPECIAL FEATURES	Model name	55VH7B
	Screen Size	55" class (54.64" diagonal)		File Play With USB	Yes
	Panel Technology	IPS		Internal Memory	8GB (System 4GB + Available 4GB)
	Aspect Ratio	16:9		Wi-Fi	WiFi Dongle Ready
	Native Resolution	1920 x 1080 (FHD)		USB Cloning	Logo image download, Sent to USB, Receive from USB
	Pixels (H x V x 3)	6,220,800		Contents Scheduling	USB, Internal memory
	Brightness	700cd/m ²		Calibration Mode	Yes
	Contrast Ratio	1,400:1		DST(Summertime Saving)	Yes
	Dynamic CR	500,000:1		Sync Mode	Time sync, Content sync
	Color Gamut	72%		PM Mode	Yes
	Viewing Angle (H x V)	178 x 178		Framework Update (LAN)	Yes
	Color Depth	1.06 Billion		Local Time Auto Setting	Yes
	Response Time	8ms (G to G BW)		Still Image Diagnosis	Yes
	Running Time	24Hr		HDMI-CEC	Yes
	Orientation	Portrait & Landscape		Wake On LAN	Yes
				Digital Audio Input	Yes
				Power On Delay	0 - 255
				Pivot Mode	Yes
				Content Rotation	0,90
				OSD Portrait Mode	0,90
				Intelligent Auto	Yes
				Password Change	Yes
				SetID Setup	Manual, Auto
				Configuration Setup	USB auto Playback
				Lock Mode	USB
				Fail Over	USB, RGB, DVI, HDMI, Internal Memory
				SuperSign Server Setup	Signage name, Server IP setting, Server IP Status
				Media Share	Yes
				Beacon	Yes
				Embedded Template	Yes
				Check Screen	Yes
				OPS PC Power Control	Sync On, Sync On/Off, Disable
			ENVIRONMENT CONDITIONS	Operation Temperature	32°F - 104°F
				Operation Humidity	10% - 90%
			POWER	Power Supply	100-240V-, 50/60Hz
				Power Type	Built-In Power
				Typ.	220W
				Smart Energy Saving	110W
				DPM	0.7W
				Power Off	0.5W
			CERTIFICATION	Safety, EMC, ErP / ENERGY STAR®	UL / cUL / CB / TUV / KC / FCC Class "A" / CE / KCC / FCC Class "A" / CE / KCC
			MEDIA PLAYER COMPATIBILITY	OPS Type Compatible	Yes
				External Media Player Attachable	Yes (MP500/MP700)
			SOFTWARE COMPATIBILITY	SuperSign-W lite	Yes
				SuperSign-C	Yes
			CABINET	Bezel Width	0.9mm (Top/Bottom/Left/Right)
				(W x H x D)	47.69" x 26.86" x 3.41"
				Weight	43.65lbs
				Carton (W x H x D)	53.27" x 33.66" x 10.35"
				Carton Weight	55.12lbs
				Handle	Yes
				VESA™ Compatible	600mm x 400mm
			ACCESSORIES	Basic	Remote Controller, Power cable, DP Cable, Manual, IR Receiver, RS-232C Cable, LAN Cable, Guide Bracket, Screw
				Optional	Wall Mount (Landscape : WM-L640V, Portrait : WM-P640V) OPS Kit (KT-OPSA), HD Base T(EB-B100)
			OTHER	UPC	7 19192 19831 9
			WARRANTY		3-Year Limited Warranty Parts/Labor/Backlight Extended warranty options are also available

* SuperSign software is available at: <http://www.lg.com/us/commercial/video-walls>



LG Electronics U.S.A., Inc.
HE B2B Division
2000 Millbrook Drive
Lincolnshire, IL 60069

Customer Service: 888.865.3026
www.LGSolutions.com/support

Contact your LG Regional Sales Representative:
Channel: 800.897.8871
Hospitality: 800.228.1236
E-mail: info@LGSolutions.com

SPEC_55VH7B_071517_PR

All screen images are simulated. Dimensions and weights are approximate. Design, features and specifications subject to change without notice.

© Copyright 2015 LG Electronics USA, Inc. All Rights Reserved. "LG Life's Good" is a registered trademark of LG Corp All other product and brand names are trademarks or registered trademarks of their respective companies.

Printed in the USA. September 2015

For further resources and
documentation please visit us:
www.cinos.net